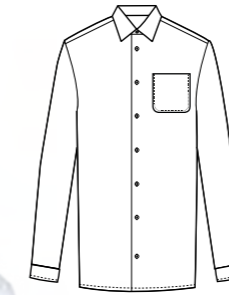


Camisa y blusa en popelín manga larga

Long sleeve poplin shirt and blouse



REF: CIERZO 3101 BLANCO
REF: CIERZO 3102 NEGRO, CELESTE Y GRANATE
REF: CIERZO 3102C RESTO DE COLORES

Descripción *Description*

Camisa caballero de manga larga con un tejido popelín de 115 gr/m². Cuello italiano, un botón en puño, sin tapeta en botonadura y dos pinzas, una a cada lado, en espalda. La camisa Cierzo se fabrica en 15 colores.

Long sleeved men's shirt in 115 gr/m² poplin cloth. Italian collar, one button in the cuff, without plackets in the buttons and two pleats, one on each side of the back. The Cierzo shirt is made in 15 colours.

COLORES: 00 blanco, 99 negro, 65 celeste, 55 granate, 25 beig, 51 fucsia, 48 chocolate, 26 mostaza, 56 caldera, 62 Malva, 66 morado, 67 azul royal, 07 gris perla, 12 gris medio, 71 verde pistacho.

COLOURS: 00 white, 99 black, 65 sky blue, 55 maroon, 25 beige, 51 fuchsia, 48 chocolate, 26 mustard, 56 copper, 62 mauve, 66 purple, 67 royal blue, 07 pearl grey, 12 medium grey, 71 pistachio green.

TALLAS: 2, 3, 4, 5, 6, 7, 8, 9

SIZES: 2 to 9

COMPOSICION: 67% poliéster, 33% algodón

COMPOSITION: 67% polyester, 33% cotton



REF: GALERNA 3601 BLANCO
REF: GALERNA 3602 NEGRO, CELESTE Y GRANATE
REF: GALERNA 3602C RESTO DE COLORES

Descripción *Description*

Blusa entallada de señora de manga larga con un tejido popelín de 115 gr/m². Cuello italiano, botón en puño, sin tapeta en botonadura y dos pinzas, una a cada lado, en espalda y delantero. La blusa galerna se fabrica en 15 colores.

Long sleeved, fitted blouse for women in 115 gr/m² poplin cloth. Italian collar, two buttons in the cuff, without plackets in the buttons and two pleats, one on each side, in the back and in the front. The Galerna blouse is made in 15 colours.

COLORES: 00 blanco, 99 negro, 65 celeste, 55 granate, 25 beig, 51 fucsia, 48 chocolate, 26 mostaza, 56 caldera, 62 Malva, 66 morado, 67 azul royal, 07 gris perla, 12 gris medio, 71 verde pistacho.

COLOURS: 00 white, 99 black, 65 sky blue, 55 maroon, 25 beige, 51 fuchsia, 48 chocolate, 26 mustard, 56 copper, 62 mauve, 66 purple, 67 royal blue, 07 pearl grey, 12 medium grey, 71 pistachio green.

TALLAS: 36, 38, 40, 42, 44, 46, 48, 50, 52, 54, 56, 58

SIZES: 36 to 58

COMPOSICION: 67% poliéster, 33% algodón

COMPOSITION: 67% polyester, 33% cotton